

Selected Images

Anthea Hamilton
SORRY I'M LATE

8 September - 25 November
Firstsite



Yogic Travolta Screensaver and Clock
2012

Screensaver with clock, computer application



Yogic Travolta Screensaver and Clock (London, Paris, Tokyo, New York, Milan)
2012
5 plasma monitors, computers, scaffolding



Portrait of John (Rubbernecking)

2012

Wallpaper

- Height of each face is the same
- The height of each face to be no less than 95% of the height of the lowest part of the wall the work is installed upon.
- Top of 'head', partial parts of face may continue or be truncated around architectural features.
- *Portrait of John (Rubbernecking)* can be made from a varying number of faces (minimum of 1).



Sorry I'm Late (Relief)

2012

Wood, chroma key video paint, archway, chroma key video vinyl

- Total height of letters to be no less than 95% of the wall height the work is installed upon.
- The arched doorway, in some cases, can be substituted for wood in the same thickness and finish as the letters.



Travolta Kimono

2012

Digital print on silk viscose satin, cotton, cotton rope, brushed steel, string, wood
300 x 300 x 42 cm



Travolta Kimono, rear
2012

Digital print on silk viscose satin, cotton, cotton rope, brushed steel, string, wood
300 x 300 x 42 cm



Travolta Kimono, detail
2012
Digital print on silk viscose satin, cotton, cotton rope, brushed steel, string, wood
300 x 300 x 42 cm



Venice (The Latte Version)
2012

Edition of 5+2AP



Sorry I'm Late, installation view
2012

(showing *Leg Chair*, 2012 and *Melons*, 2009)



Melons
2009
Inkjet print on paper, card
78 x 78 x 4 cm

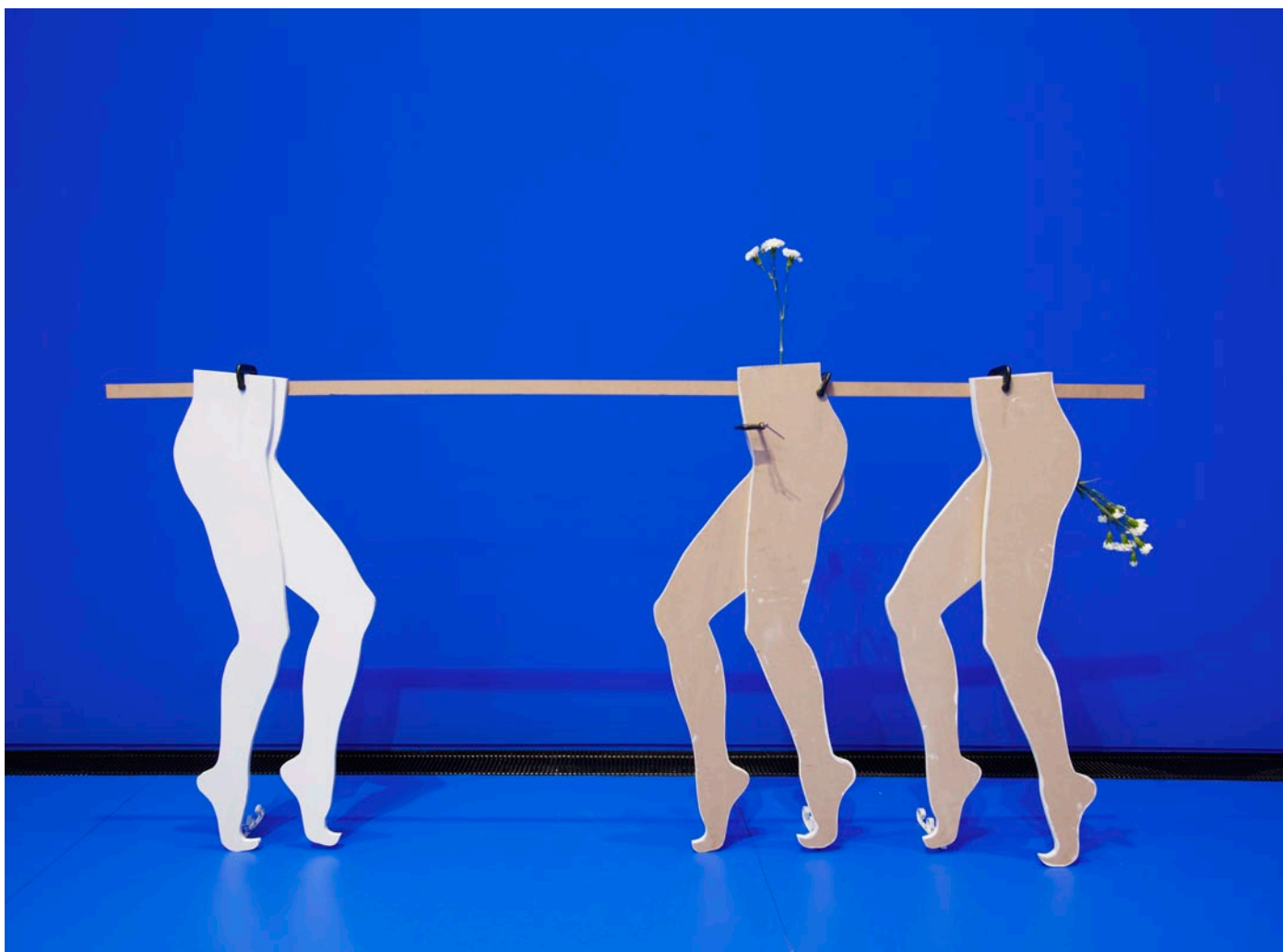


CUTOUTS

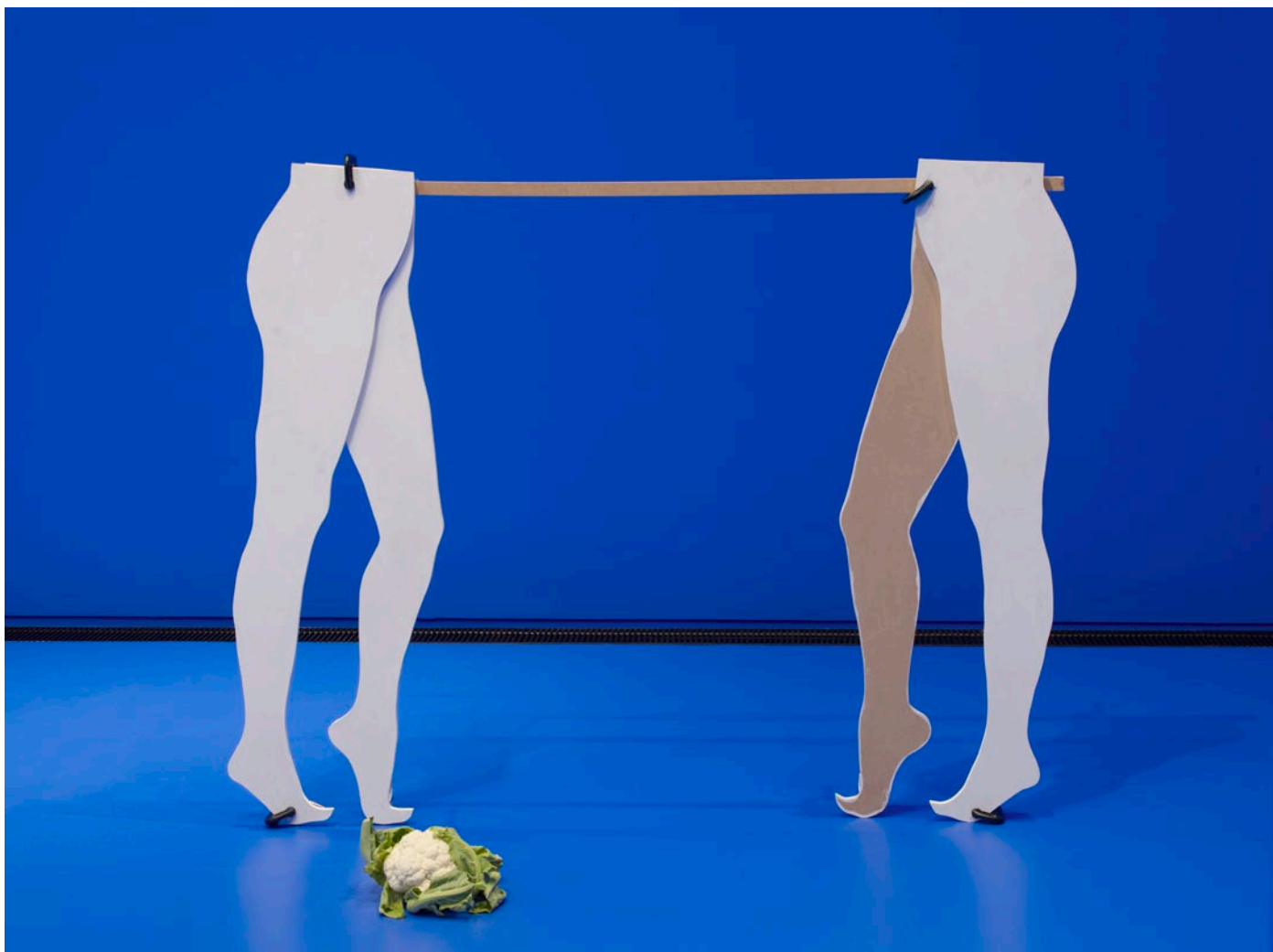
2012

Installation

Chroma key video paint, chroma key video vinyl flooring including the works: *Gate*, 2007/2012, *I am a capable woman*, 2012, *Pulley [2]*, 2012, *Love Object*, 2009.



Gate
2007 / 2012
Wood, paint, clamps, cut flowers
146 × 248 × 26 cm



Pulley [2]
2012
Wood, cauliflower, g-clamps, steel bracket
120 x 152 x 26 cm



I am a capable woman

2012

PVC waste pipes, rubber, elastic, steel, PVC vinyl, zippers

260 x 180 x 100 cm

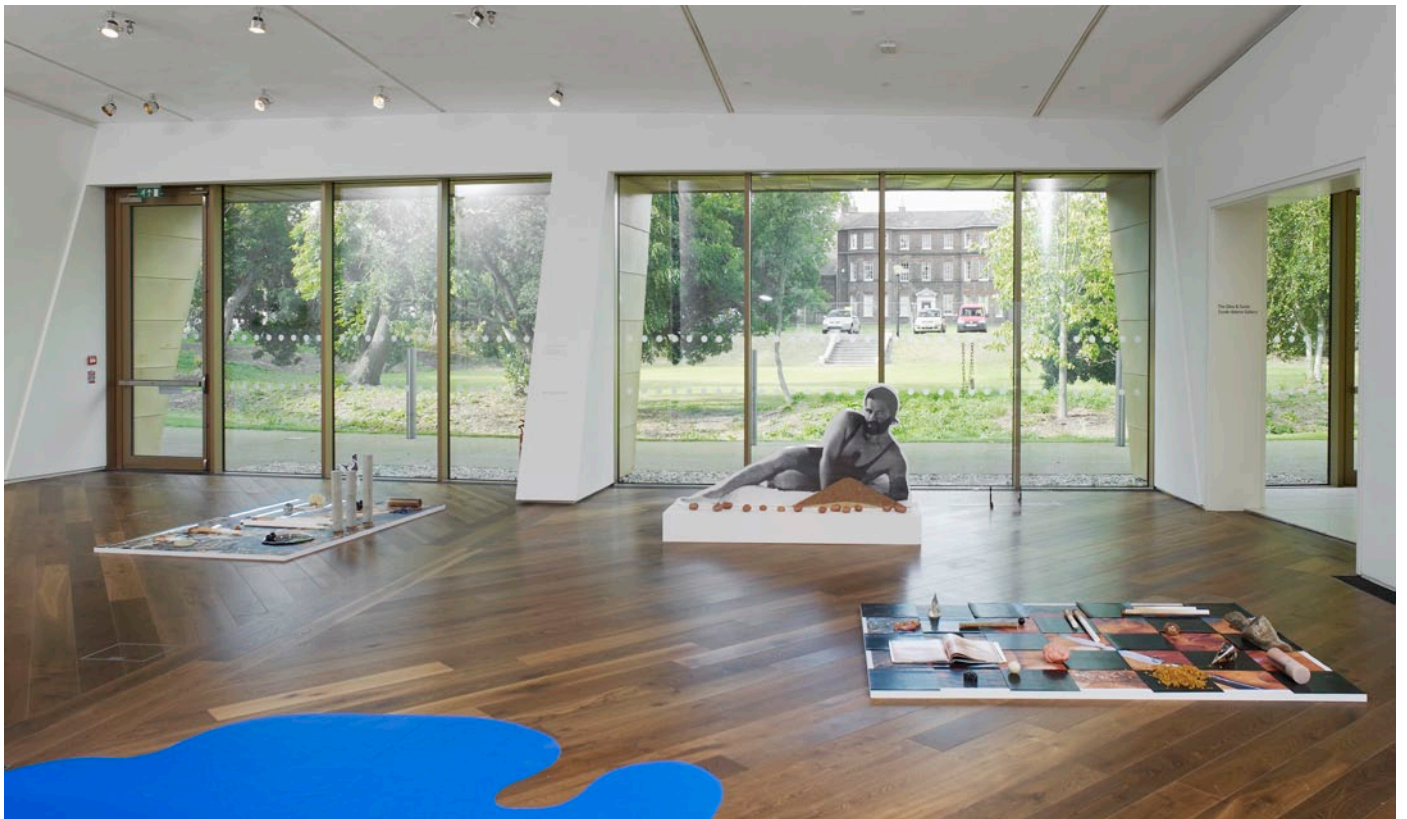


Love Object

2009

Acrylic, 'The Simpson's' memorabilia, Murano glass, Mozart wig

68 x 50 x 50 cm



Sorry I'm Late
2012

Installation view, showing l-r:
Eryngoes, 2012, *Karl Lagerfeld Bean Counter*, 2012 and *Chopsticks*, 2012.

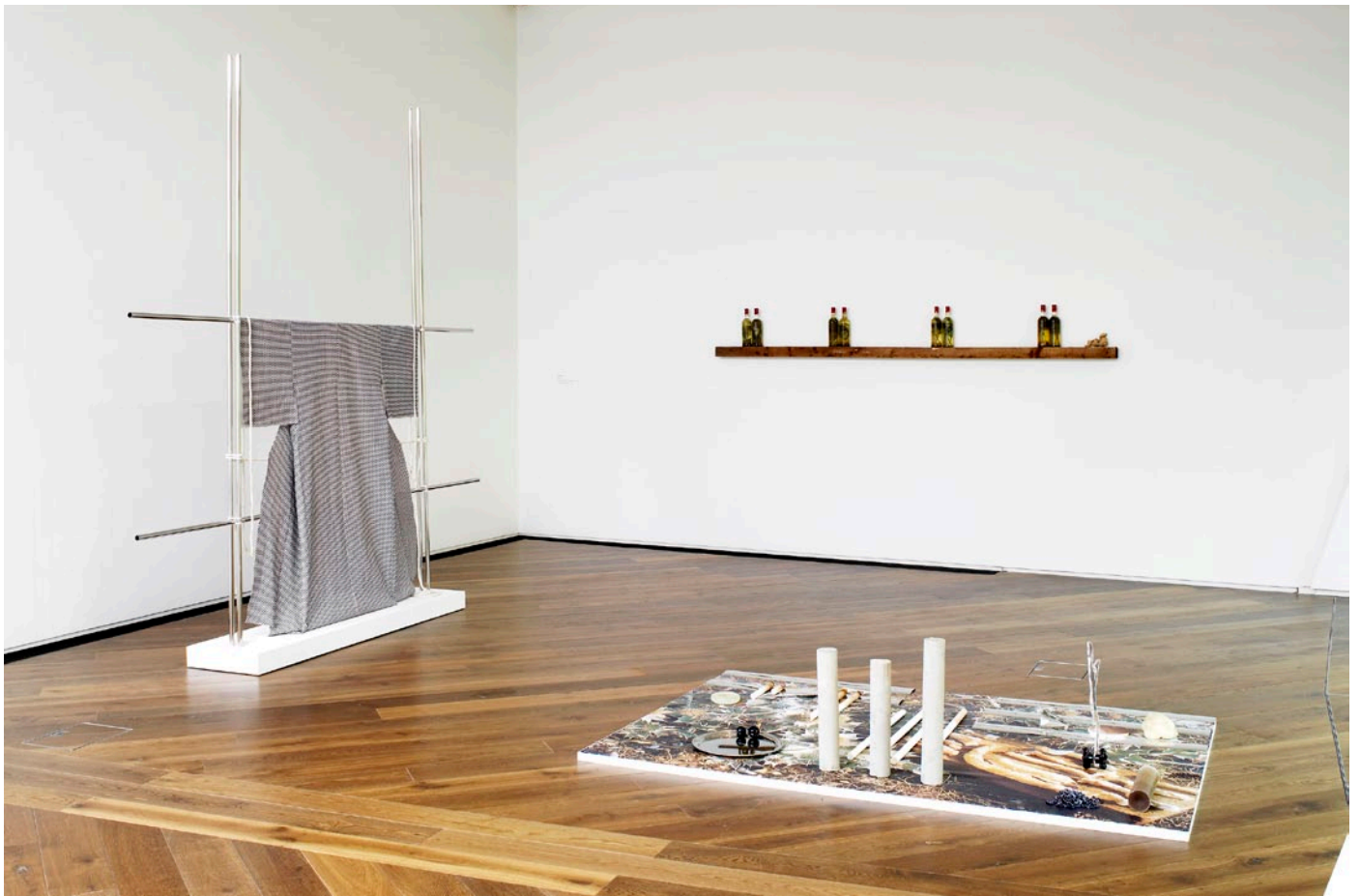


Karl Lagerfeld Bean Counter

2012

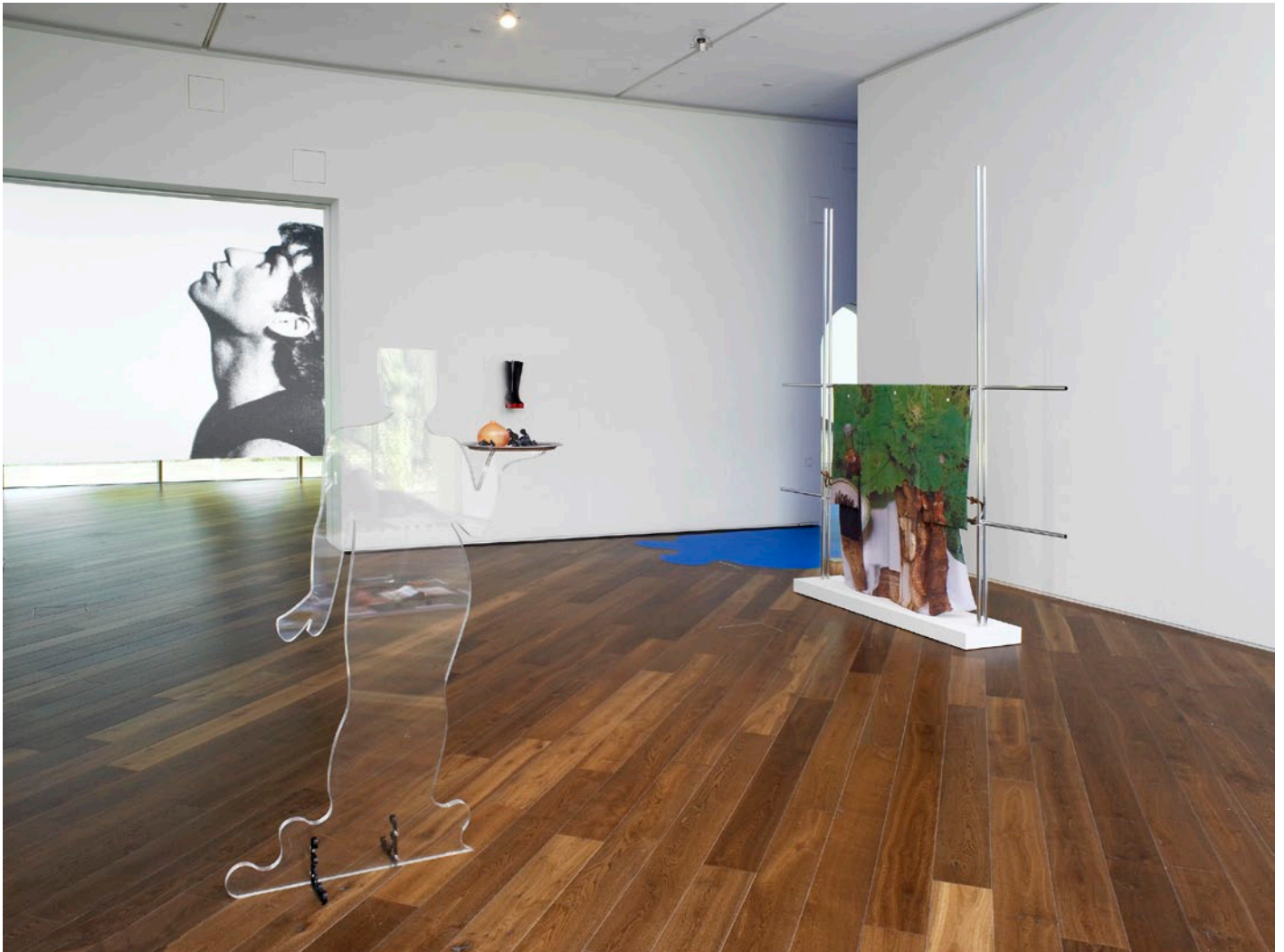
Thermoformed acrylic, wood, digital print on paper, buckwheat, Desiree potatoes, metal brackets

112 × 190 × 60 cm



Sorry I'm Late
2012

Installation view, showing l-r:
Faber and Faber Kimono, 2012, *Moyen Âge*, 2012 and *Eryngoes*, 2012



Sorry I'm Late
2012

Installation view, showing l-r:
Portrait of John (Rubbernecking), 2012, *Waitresses (after Allen Jones)*, 2012, and *Wild Food Kimono*, 2012



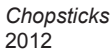
Waitresses (After Allen Jones) (2-parts)

2012

Acrylic, metal brackets, brass, rice cakes, stainless steel, nylon, plastic onion, turtle beans, resin

1: 172 x 107 x 35 cm

2: 172 x 96 x 35 cm



15 × 210 × 150 cm



Chopsticks, detail
2012

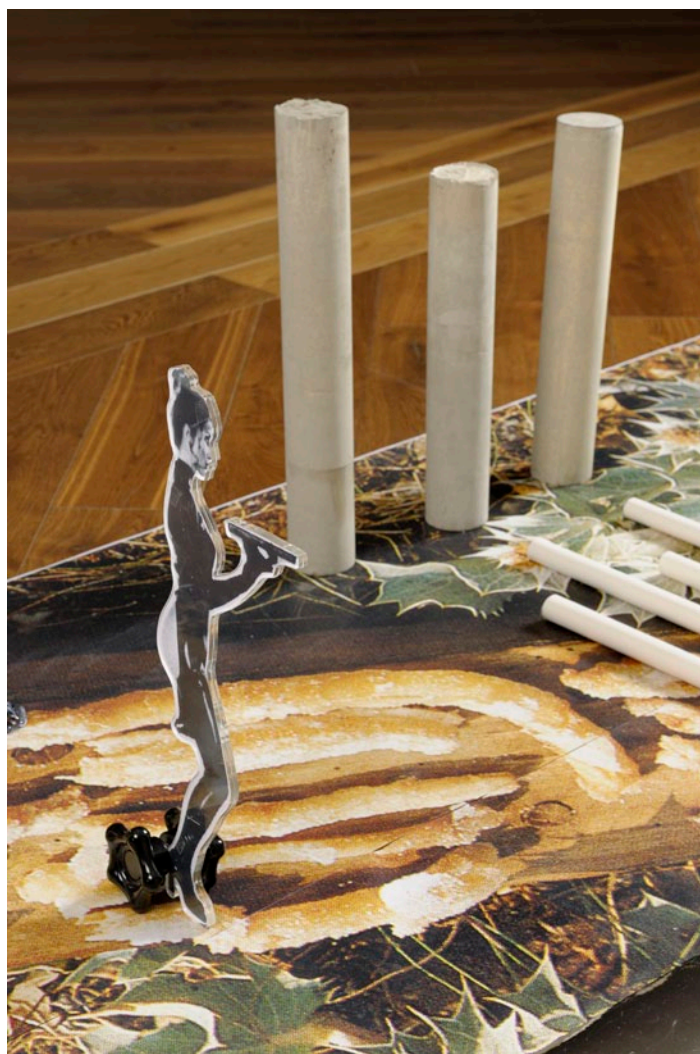
Rubber, digital print on paper, plaster, soy sauce, resin, nylon, stainless steel, shallots, Bert Stern's 'The Last Sitting', turtle beans, blond raisins, wax, yew wood, marble onyx, china eggs
15 × 210 × 150 cm



Eryngoes

2012

Digital print on paper, plaster, browning plaster, diamante, seaweed, marble onyx, cement, wax, resin, mirrored vinyl, stainless steel, nylon, acrylic.
45 x 220 x 168 cm



Eryngies, detail
2012

Digital print on paper, plaster, browning plaster, diamante, seaweed, marble onyx, cement, wax, resin, mirrored vinyl, stainless steel, nylon, acrylic.
45 x 220 x 168 cm



Faber and Faber Kimono

2012

Digital print on cotton duck, cotton, brushed steel, string, wood

300 x 300 x 42 cm



Faber and Faber Kimono, detail
2012

Digital print on cotton duck, cotton, brushed steel, string, wood
300 x 300 x 42 cm



Faber and Faber Kimono, detail of kimono and plinth
2012
Digital print on cotton duck, cotton, brushed steel, string, wood
300 x 300 x 42 cm



Moyen Âge, detail

2012

Glass bottles, vodka, dill, peppercorns, coins, ginger, raisins, wood

Dimensions variable



Moyen Âge

2012

Glass bottles, vodka, dill, peppercorns, coins, ginger, raisins, wood

Dimensions variable



Wild Food Kimono

2012

Digital print on shantung dupion silk, silk viscose, leather, brushed steel, string, wood

300 x 300 x 42 cm



Wild Food Kimono, detail

2012

Digital print on shantung dupion silk, silk viscose, leather, brushed steel, string, wood

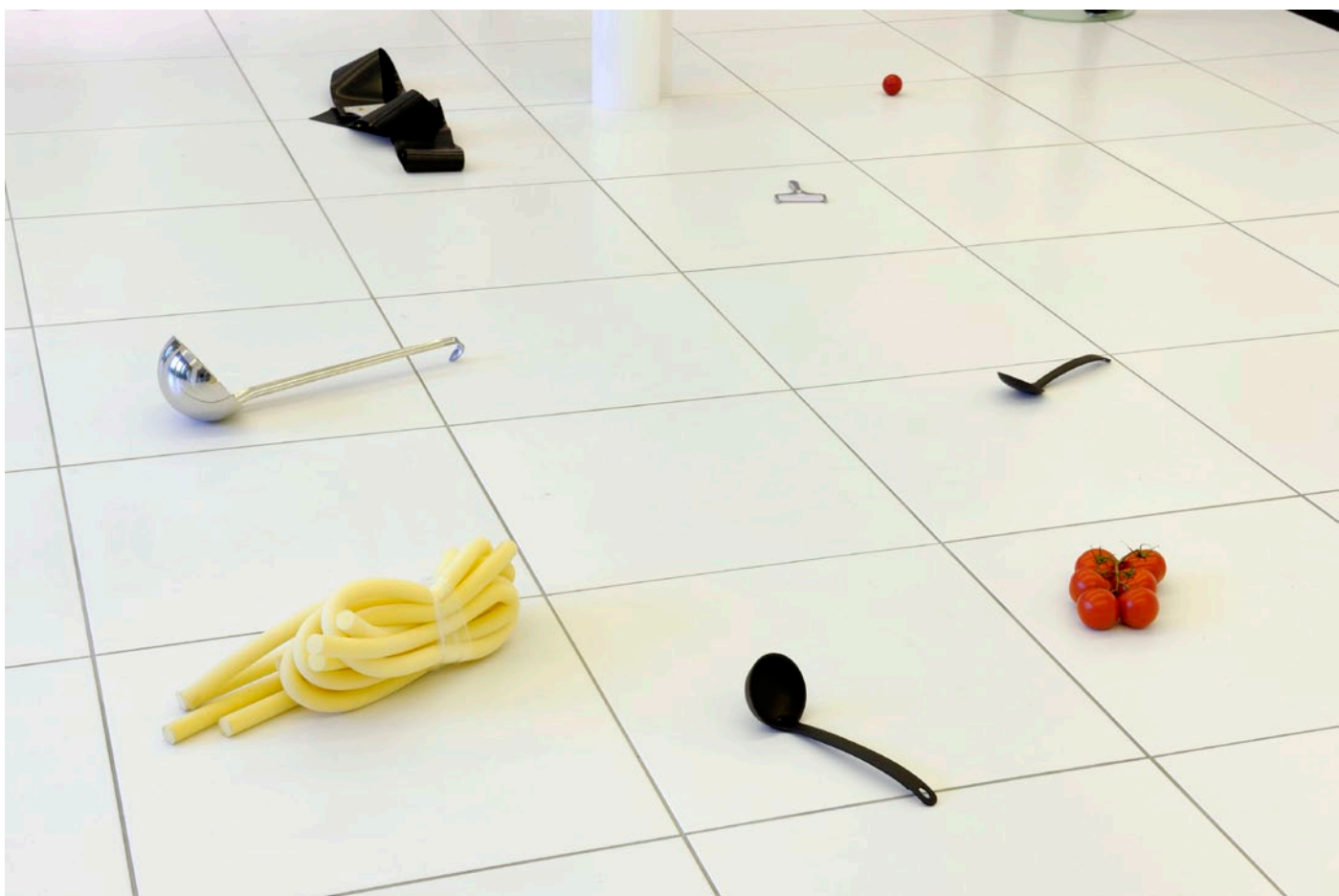
300 x 300 x 42 cm



Kabuki Chefs

2012

Ceramic tiles, mannequins, chef's clothing, culinary tools, nylon strapping, rubber, garlic, artificial lemons, paper, vertical blind weights, Givenchy fabric AW11/12, lentils, polyurethane foam, acrylic, resin, steel, tomatoes.



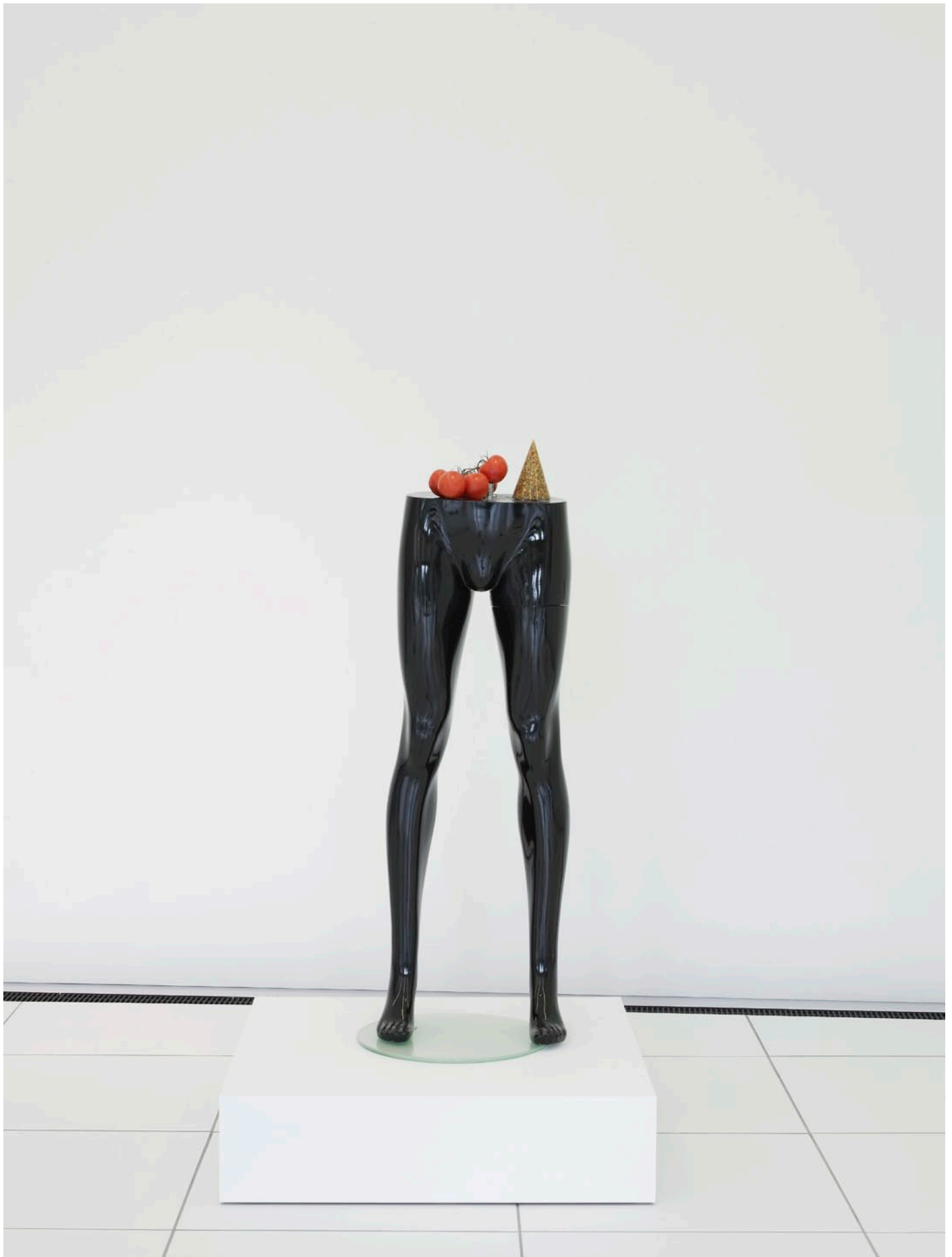
Kabuki Chefs, detail
2012

Ceramic tiles, mannequins, chef's clothing, culinary tools, nylon strapping, rubber, garlic, artificial lemons, paper, vertical blind weights, Givenchy fabric AW11/12, lentils, polyurethane foam, acrylic, resin, steel, tomatoes.



Kabuki Chefs, detail
2012

Ceramic tiles, mannequins, chef's clothing, culinary tools, nylon strapping, rubber, garlic, artificial lemons, paper, vertical blind weights, Givenchy fabric AW11/12, lentils, polyurethane foam, acrylic, resin, steel, tomatoes.



Kabuki Chefs, detail
2012

Ceramic tiles, mannequins, chef's clothing, culinary tools, nylon strapping, rubber, garlic, artificial lemons, paper, vertical blind weights, Givenchy fabric AW11/12, lentils, polyurethane foam, acrylic, resin, steel, tomatoes.



Kabuki Chefs, detail

2012

Ceramic tiles, mannequins, chef's clothing, culinary tools, nylon strapping, rubber, garlic, artificial lemons, paper, vertical blind weights, Givenchy fabric AW11/12, lentils, polyurethane foam, acrylic, resin, steel, tomatoes.



Leg Chair
2012

Acrylic, brass, plaster, wax, sushi nori, rice cakes
81 × 92 × 46 cm

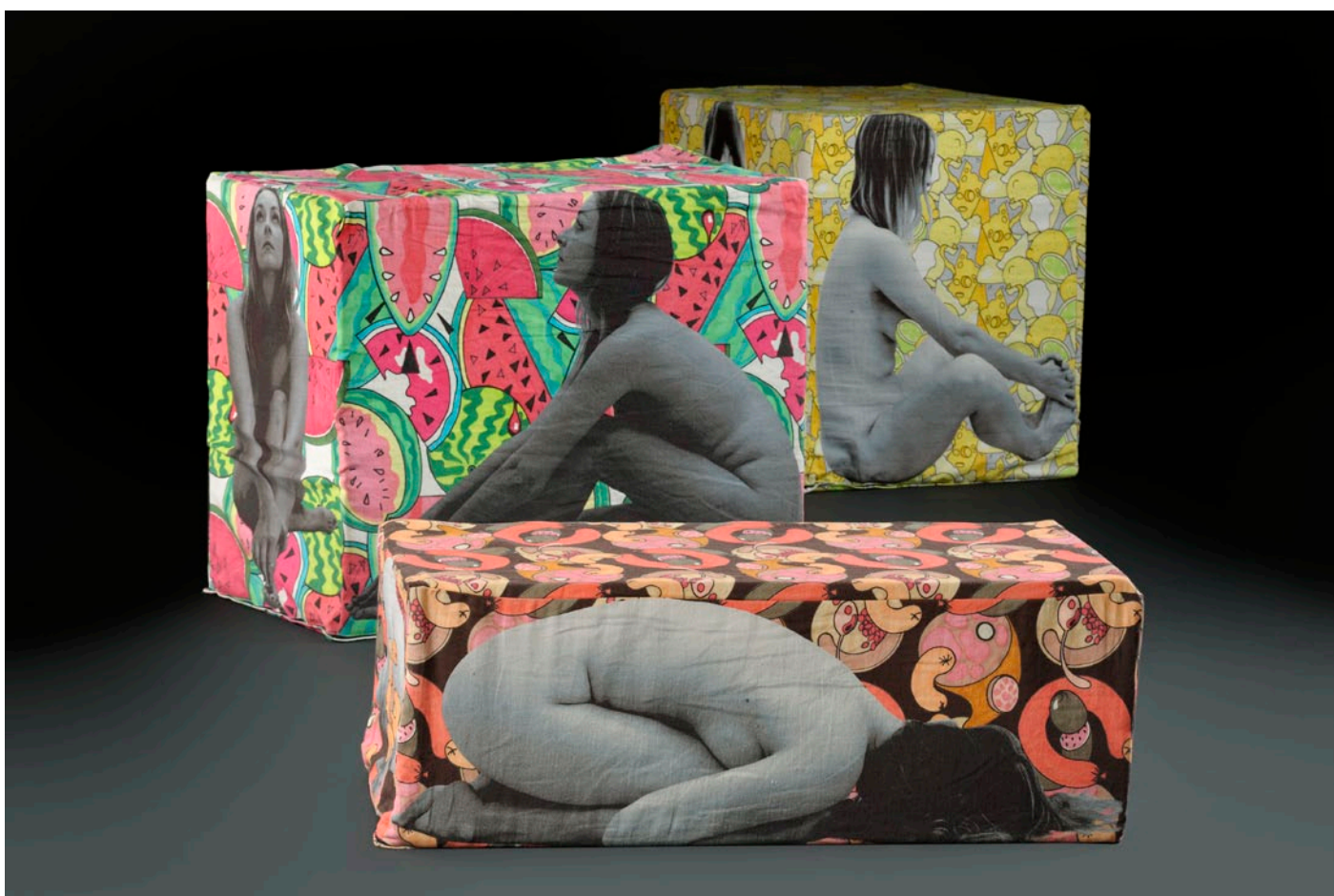


Leg Chair, detail

2012

Acrylic, brass, plaster, wax, sushi nori, rice cakes

81 × 92 × 46 cm



Anthea Hamilton and Julie Verhoeven

Fruity Seating

2012

Digital print on linen, foam

Series of 6

£POA